



SURE STAR COMPUTER CO., LTD 添誠資訊股份有限公司
http://www.surestar.com.tw Tel:+886 2 2682 2505
E-mail:info@surestar.com.tw Fax:+886 2 2682 2515
NO.2-1, DAAN ROAD, SHULIN .DIST., NEW TAIPEI CITY 238, TAIWAN

SPECIFICATION

Model Name :

SS-1UxxEx *series*

Description :

400W 、 460W 、 520W 、 600W 1U Single Power Supply

Version : B0

Issued Date : 20230803



1. General Description

This specification defines the characteristic of Single power supply with 1Unit high. And **SURE STAR** model name is SS-1U40ES for 400W 、SS-1U46ES for 460W 、SS-1U52ES for 520W 、SS-1U60EL for 600W output.

2. Input Characteristic

2.1. Input connector

The input connector shall be an IEC60320 C14 inlet, rated for 15A/250Vac.

2.2. Input Voltage and Frequency

<i>Minimum</i>	<i>Nominal</i>	<i>Maximum</i>	<i>Measure</i>
90	100~240	264	Vac
47	50~60	63	Hz

2.3. Input Current and Inrush Current

<i>Input Voltage</i>	<i>MAX. Input Current</i>	<i>Inrush Current</i>
115Vac	8A/8A/8A/10A	25A
230Vac	4A/4A/4A/5A/	50A

2.4. Power Factor

The minimum power factor shall be 0.95 with full load and input 230Vac/50Hz.

3. Output Characteristic

3.1. DC Output Characteristic

<i>Output Voltage</i>	<i>Min. Current</i>	<i>Max. Current</i>	<i>Regulation</i>	<i>Ripple & Noise</i>
+3.3V	1A	25A	±5%	50mV
+5V	1A	25A	±5%	50mV
+12V	1A	32A/34A/40A/48A	±5%	120mV
-12V	0A	0.8A	±5%	120mV
+5VSB	0.1A	3.5A	±5%	50mV

Note: :

1. The combined power from +3.3V and +5V shall not exceed 160W/160W/170W/180W.
2. The max total power shall not exceed 400W/460W/520W/600W.
3. Ripple and noise bandwidth is set to 20MHz.
4. Add a 0.1uF ceramic capacitor in parallel with a 10uF tantalum capacitor at output connector terminals for ripple and noise measurement.



3.2. Efficiency

The minimum efficiency of power supply is 80% with full load and 115Vac/60Hz input.

3.3. Hold up Time

The output voltages stay in regulation at least 16ms with 100% load after loss of AC input.

3.4. Rise Time

The output voltages rise from 10% to 90% with full load shall be in 20ms maximum.

3.5. Dynamic Loading

The output voltages shall remain in regulation for the step loading, and in the limits for the capacitive loading specified below :

<i>Output</i>	<i>Step Load Size</i>	<i>Load Slew Rate</i>	<i>Capacitive Load</i>
+3.3V	30% of max load	0.5A / μ sec	1000uF
+5V	30% of max load	0.5A / μ sec	1000uF
+12V	65% of max load	0.5A / μ sec	2200uF
+5VSB	25% of max load	0.5A / μ sec	1uF

3.6. PSON Remote on/off Control

The PSON signal is required to remotely turn on/off the power supply.

PSON is an active low TTL compatible signal that turns on the main power rails.

	<i>PSU On</i>	<i>PSU Off</i>
PSON Signal	LOW (0.8V max.)	HI (2V min.)

3.7. Power Good Signal

Power Good, also called PG or PWOK, is an active high TTL compatible signal.

PG signal is to indicate that all output voltages are in regulation and ready for use.

Below is for a representation of the timing characteristics of PG signal.

Power Good on delay time	100ms to 500ms
Power Good off delay time	1ms (min.)



4. Protection

4.1. Over Current Protection

<i>Output</i>	<i>Min.</i>	<i>Max.</i>	<i>Comment</i>
+3.3V	110%	150%	PSU shutdown
+5V	110%	150%	PSU shutdown
+12V	110%	150%	PSU shutdown

4.2. Over Voltage Protection

<i>Output</i>	<i>Min.</i>	<i>Max.</i>	<i>Comment</i>
+3.3V	3.7V	4.1V	PSU shutdown
+5V	5.7V	6.5V	PSU shutdown
+12V	13.1V	14.5V	PSU shutdown

4.3. Short Circuit Protection

<i>Output</i>	<i>Comment</i>
+3.3V	PSU shutdown
+5V	PSU shutdown
+12V	PSU shutdown

4.4. Over Temperature Protection

The power supply would be protected against over temperature condition by loss of cooling or excessive ambient temperature. The PSU will shutdown in an OTP condition.

5. Insulation

5.1. Dielectric Withstand Voltage

Primary to Ground	1500Vac (10mA) for 1 second
-------------------	-----------------------------

5.2. Leakage Current

Leakage current is 3.5mA maximum at 240Vac/50Hz.

6. Safety

CB、CE、TUV、UL、BSMI、CCC。

Please visit our website and get the latest safety certificate.



SURE STAR COMPUTER CO., LTD 添誠資訊股份有限公司
http://www.surestar.com.tw Tel:+886 2 2682 2505
E-mail:info@surestar.com.tw Fax:+886 2 2682 2515
NO.2-1, DAAN ROAD, SHULIN .DIST., NEW TAIPEI CITY 238, TAIWAN

7. EMC

CE 、 FCC 、 BSMI 、 CCC ◦ (Class A)

Please visit our website and get the latest EMC certificate.

8. Environmental Requirement

8.1. Temperature

Operating: 0°C to +45°C.

Non Operating: -20°C to +70°C.

8.2. Humidity

Operating: 20% to 90% ,non-condensing.

Non Operating: 5% to 95% ,non-condensing.

8.3. Altitude

Operating: Up to 2000m.

8.4. Cooling Method

By DC fan.

9. Reliability

9.1. MTBF

Using MIL - HDBK -217F the calculated MTBF > 100,000 hours at 25°C.



SURE STAR COMPUTER CO., LTD 添誠資訊股份有限公司

http://www.surestar.com.tw Tel:+886 2 2682 2505

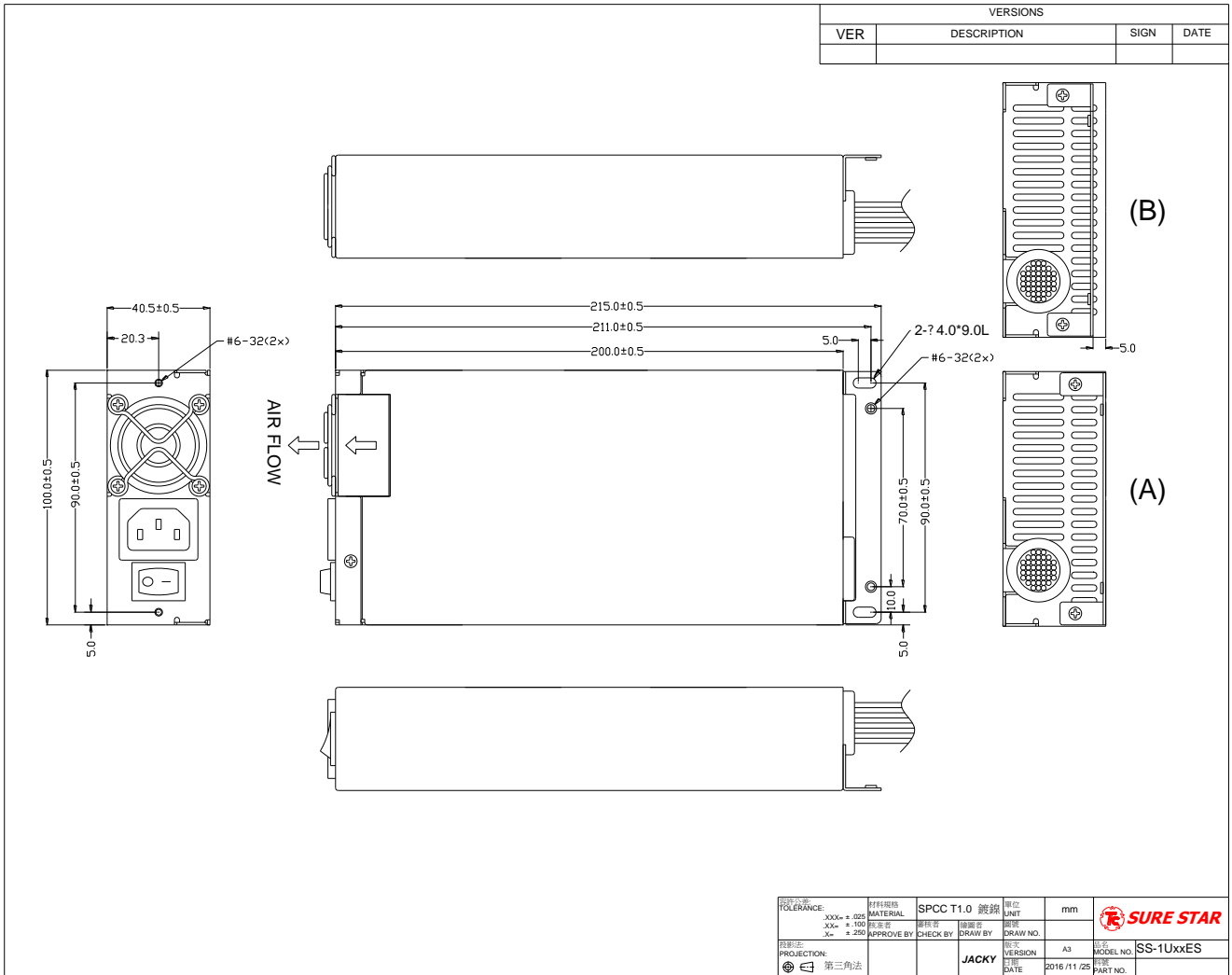
E-mail:info@surestar.com.tw Fax:+886 2 2682 2515

NO.2-1, DAAN ROAD, SHULIN .DIST., NEW TAIPEI CITY 238, TAIWAN

10. Mechanical Drawing and Output Wire

10.1. Outline (bracket optional): L 200 x W 100 x H 40.5 mm.

For SS-1U40ES,SS-1U46ES,SS-1U52ES





SURE STAR COMPUTER CO., LTD 添誠資訊股份有限公司

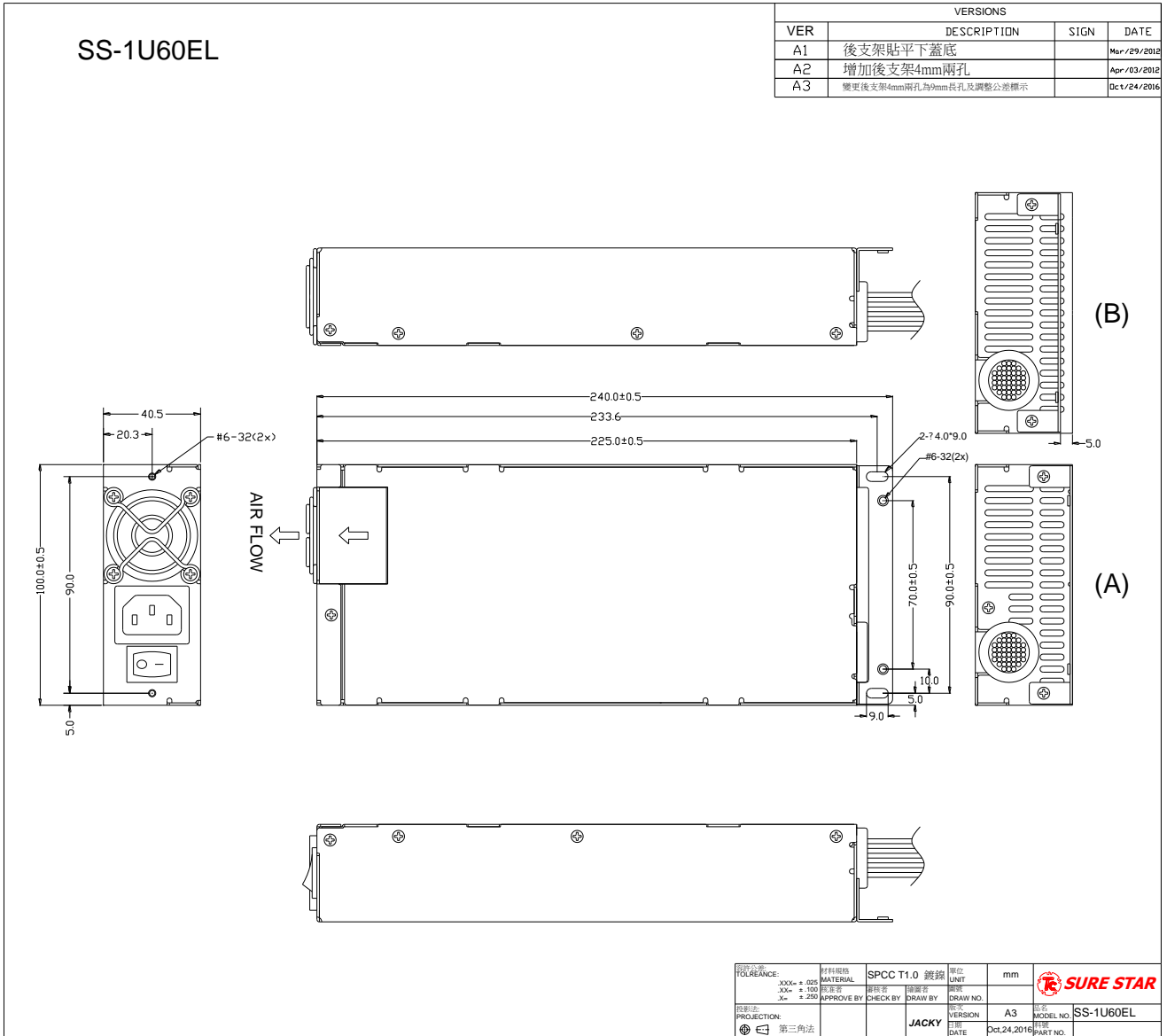
http://www.surestar.com.tw Tel:+886 2 2682 2505

E-mail:info@surestar.com.tw Fax:+886 2 2682 2515

NO.2-1, DAAN ROAD, SHULIN .DIST., NEW TAIPEI CITY 238, TAIWAN

10.2. Outline (bracket optional): L 225 x W 100 x H 40.5 mm.

For SS-1U60EL





10.3. Output Wire (could be customization) :

The diagram illustrates various output wire configurations with dimensions and pin connections. Dimensions include L=450mm±20mm and L=150mm±15mm. Pin connections are labeled with PIN1 through PIN12. The configurations include:

- 20+4Pins(EPS12V)
- 8Pins(EPS12V)
- 4Pins(ATX12V, FOR P4)
- 4Pins(HD/CD-ROM/RW)
- 4Pins(HD/CD-ROM/RW)
- 4Pins(FLOPPY DISK)
- SATA HDD

Each configuration includes a table with columns for Housing No., Pin No., Wire Color, Signal, Wire Type, and Length.

VERSIONS					
VER	DESCRIPTION		SIGN	DATE	
				/	/

Housing No.	Pin No.	WIRE COLOR	LENGTH	Pin No.	WIRE COLOR	LENGTH
1	1	ORANGE(+3.3V)	450mm±18AWG	13	ORANGE(+3.3V)	450mm±18AWG
2	2	ORANGE(+3.3V)	450mm±18AWG	14	ORANGE(+3.3V)	450mm±20AWG
3	3	BLACK(GND)	450mm±18AWG	15	BLACK(GND)	450mm±18AWG
4	4	RED(+5V)	450mm±18AWG	16	GREEN(PS-ON)	450mm±20AWG
5	5	BLACK(GND)	450mm±18AWG	17	BLACK(GND)	450mm±18AWG
6	6	RED(+5V)	450mm±18AWG	18	BLACK(GND)	450mm±18AWG
7	7	BLACK(GND)	450mm±18AWG	19	BLACK(GND)	450mm±18AWG
8	8	BLACK(GND)	450mm±18AWG	20	BLACK(GND)	450mm±18AWG
9	9	BLACK(GND)	450mm±18AWG	21	BLACK(GND)	450mm±18AWG
10	10	YELLOW(+12V)	450mm±18AWG	22	RED(+5V)	450mm±18AWG
11	11	YELLOW(+12V)	450mm±18AWG	23	RED(+5V)	450mm±18AWG
12	12	ORANGE(+3.3V)	450mm±18AWG	24	BLACK(GND)	450mm±18AWG

Housing No.	Pin No.	WIRE COLOR	SIGNAL	WIRE TYPE	LENGTH
1	1	BLACK/BLACK	COM	18AWG±18AWG	450mm±20mm
2	2	BLACK/BLACK	COM	18AWG±18AWG	
3	3	BLACK/BLACK	COM	18AWG±18AWG	
4	4	BLACK/BLACK	COM	18AWG±18AWG	
5	5	YELLOW	+12V	18AWG	150mm±15mm
6	6	YELLOW	+12V	18AWG	
7	7	YELLOW	+12V	18AWG	
8	8	YELLOW	+12V	18AWG	
1	1	BLACK	COM	18AWG	150mm±15mm
2	2	BLACK	COM	18AWG	
3	3	YELLOW	+12V	18AWG	
4	4	YELLOW	+12V	18AWG	
1	1	YELLOW/YELLOW	+12V	18AWG	450mm±20mm
2	2	BLACK/BLACK	COM	18AWG	
3	3	BLACK/BLACK	COM	18AWG	
4	4	RED/RED	+5V	18AWG	150mm±15mm
1	1	YELLOW/YELLOW	+12V	18AWG	
2	2	BLACK/BLACK	COM	18AWG	
3	3	BLACK/BLACK	COM	18AWG	150mm±15mm
4	4	RED/RED	+5V	18AWG	
1	1	YELLOW	+12V	18AWG	
2	2	BLACK	COM	18AWG	
3	3	BLACK	COM	18AWG	
4	4	RED	+5V	18AWG	
1	1	YELLOW/YELLOW	+12V	18AWG	450mm±20mm
2	2	BLACK/BLACK	COM	18AWG	
3	3	BLACK/BLACK	COM	18AWG	
4	4	RED/RED	+5V	18AWG	150mm±15mm
1	1	YELLOW/YELLOW	+12V	18AWG	
2	2	BLACK/BLACK	COM	18AWG	
3	3	BLACK/BLACK	COM	18AWG	150mm±15mm
4	4	RED/RED	+5V	18AWG	
1	1	YELLOW	+12V	22AWG	
2	2	BLACK	COM	22AWG	
3	3	BLACK	COM	22AWG	
4	4	RED	+5V	22AWG	

Housing No.	Pin No.	WIRE COLOR	SIGNAL	WIRE TYPE	LENGTH
1	1	ORANGE	+3.3V	18AWG	450mm±20mm
2	2	BLACK/BLACK	COM	18AWG	
3	3	RED/RED	+5V	18AWG	
4	4	BLACK/BLACK	COM	18AWG	
5	5	YELLOW/YELLOW	+12V	18AWG	
1	1	ORANGE	+3.3V	18AWG	150mm±15mm
2	2	BLACK	COM	18AWG	
3	3	RED	+5V	18AWG	
4	4	BLACK	COM	18AWG	
5	5	YELLOW	+12V	18AWG	

MATERIAL	WIRE	WIRE GAUGE	UNIT
300K	300K	300K	mm

第三角法
 APPROVE BY: [Signature]
 CHECK BY: [Signature]
 DRAW NO.: [Number]
 VERSION: A0
 DATE: 2023/7/25
 MODEL NO: Wireout_SS-1LXXES
 PART NO: [Number]



SURE STAR COMPUTER CO., LTD 添誠資訊股份有限公司
http://www.surestar.com.tw Tel:+886 2 2682 2505
E-mail:info@surestar.com.tw Fax:+886 2 2682 2515
NO.2-1, DAAN ROAD, SHULIN .DIST., NEW TAIPEI CITY 238, TAIWAN

11. Customization Note

Customization note shall be listed here.

End of File

NOTE : This data is subject to change without notice.